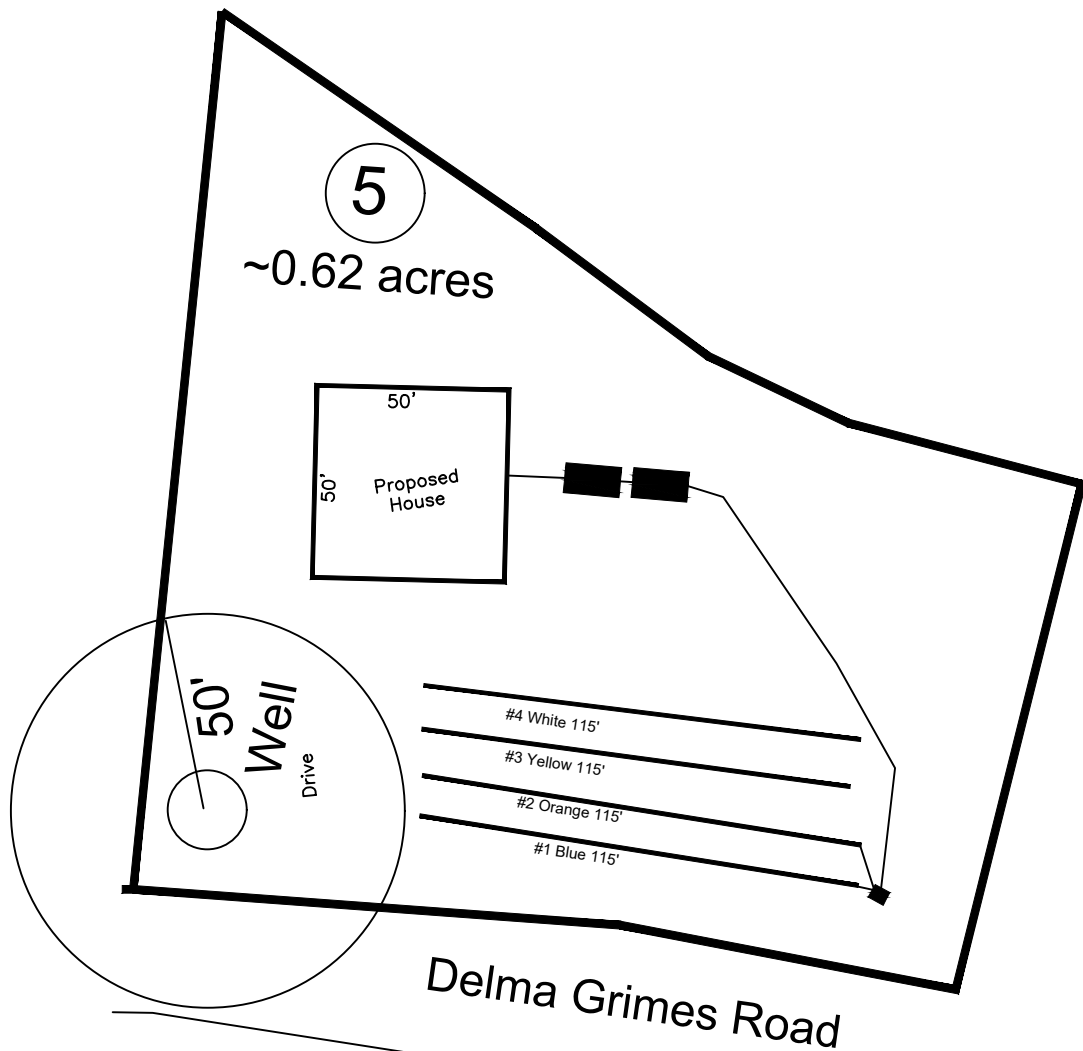


# Delma Grimes Road 3-Bedroom Septic Proposal Lot #5



System: Pump to D-Box  
Lines: 1-2 (230')  
0.4 LTAR  
18" Trench Bottom  
Accepted Status System  
Repair: Pump to D-Box  
Lines: 3-4 (230')  
0.4 LTAR  
18" Trench Bottom  
Accepted Status System

GRAPHIC SCALE  
1" = 50'



Adams  
Soil Consulting  
919-414-6761  
Job #636